



TIMMY  
GLOBAL HEALTH

2016-17 ANNUAL REPORT

# DEAR TIMMY GLOBAL HEALTH SUPPORTERS,

It has been an incredible first year leading the Timmy Global Health team. With your support, we are providing quality healthcare to those in underserved communities and fostering a new generation of global health leaders. Using local partnerships in the countries where we work, we are laying the groundwork for community-owned development and lasting health improvements.

Over the past year, I have been fortunate to meet so many unsung heroes of global health who dedicate themselves to making a difference through Timmy's work. Our talented staff, in Indianapolis and abroad, work tirelessly to deliver on the Timmy mission. Our invaluable community health promoters help identify patients, serve as translators, and follow up with complex cases. Our local partner organizations help us plan logistics and cooperate with the ministries of health in our host countries. Our medical professional volunteers donate their time and talents to treat nearly 500 patients each week. Our local doctors and nurses provide care during and in between Timmy's medical service trips. Our students and volunteers educate, advocate, raise funds, and serve communities in need – both at home and abroad.

Thank you for supporting the work that we do at Timmy Global Health. Together, we are investing in care that can improve the lives of some of the world's most underserved people. We are offering hope.

For Health,



A handwritten signature in black ink, appearing to read 'Kristina Graff'. The signature is fluid and cursive, with a large initial 'K'.

Kristina Graff, Executive Director

# 2016 - 2017 TIMMY GLOBAL HEALTH'S MEANINGFUL IMPACT

**18,649**

PATIENT  
VISITS

---

**32,710**

VOLUNTEER  
HOURS SPENT IN  
TGH CLINICS

**\$125K**

WORTH OF MEDICATION  
DISTRIBUTED IN NIGERIA

---

**881**

VOLUNTEERS SERVED  
ON TIMMY MEDICAL  
SERVICE TRIPS

**43**

MEDICAL  
SERVICE TRIPS  
TO ECUADOR,  
GUATEMALA,  
AND THE  
DOMINICAN  
REPUBLIC

---

**MISSION:** Timmy Global Health expands access to healthcare and empowers students and volunteers to tackle today's most pressing global health challenges. To achieve this goal, Timmy sends medical service teams to support the work of international partner organizations and channels financial, medical, and human resources to community based health and development projects. Through our work, we strive to empower volunteers to lead the fight for global health equity and help deliver the promise of a healthy future – one patient at a time.

# KEY COMPONENTS OF TIMMY

## ✔ **Strong Local Partnerships**

By partnering with local organizations in the countries we serve, we are able to identify local communities in need of primary healthcare and build lasting relationships.

## ✔ **Continuous Medical Service Trips**

We send teams of medical professionals and general volunteers to each site every 2 - 3 months. These teams set up mobile clinics that bring primary care services directly to underserved communities.

## ✔ **Robust Patient Referral Program**

Timmy staff and partners have developed a program to ensure patients needing additional care beyond our scope have access to local specialty care. We make arrangements for the patient and cover the cost of transportation and service associated with the care.

## ✔ **A Network of Community Health Promoters**

We empower and train local community members to recruit patients, assist with patient follow up and referrals after medical service trips, coordinate chronic disease management, and deliver preventative health education to our patients.

## ✔ **Our Own Electronic Medical Record: TimmyCare**

TimmyCare enables us to streamline clinic operations with a paperless record keeping system and easy access to patient history. The records collected help Timmy track patient well-being over time, identify trends in community health, and drive evidence-based programming to provide the most comprehensive care possible.

## ✔ **Passionate Student Chapters**

Timmy student volunteers support our mission to combat health disparities through service, advocacy, and fundraising within their local communities and their international partner sites.

## ✔ **Public Health Programming**

We complement our primary care brigades by bringing public health interventions to communities that aim to improve patient health. Timmy currently has programs in safe water systems, nutrition, and chronic care.

# HOW TIMMY GLOBAL HEALTH WORKS



## Step One:

### **Identify local communities in need of primary healthcare.**

We strengthen the capacity of local partners through short-term medical brigades and long-term public health solutions.



## Step Two:

### **Engage and partner with medical professionals, students, and community volunteers.**

Our talented medical professionals work alongside local health care providers. High school and college student chapters across the country fundraise, serve, and advocate.



## Step Three:

### **Track patient data and improve primary healthcare through our own Electronic Medical Record system, and referral systems.**

Our healthcare providers have improved data collection, tracked patient conditions, and analyzed patient data more efficiently and effectively to make programmatic and clinical decisions using TimmyCare.



## Step Four:

### **Build capacity through our “Continuity of Care” model.**

Every 3 months we send volunteer medical teams to our partner communities to provide vital, primary healthcare. Our in-country staff and partners manage referrals so that all of our patients' healthcare needs are addressed--even after our medical teams have departed.



# INTERNATIONAL PARTNER ORGANIZATIONS

## **FUNDACIÓN TIERRA NUEVA**

### **Quito, Ecuador**

A social service health organization that supports an outpatient medical institute and hospital, team of community health promoters, and a mobile medical unit to provide primary care to hard-to-reach urban communities.

*Timmy Partner Since: 1999*

## **ASOCIACION POPWUJ**

### **Quetzaltenango (Xela), Guatemala**

A Spanish-language school that uses language study to finance community development projects, including a full-time primary care clinic, nutrition program, and medical outreach for indigenous populations.

*Timmy Partner Since: 2008*

## **CENTRO DE SALUD HOMBRO A HOMBRO**

### **Santo Domingo, Ecuador**

A community clinic that manages preventative health programs, provides ongoing primary care to underserved patients, and enhances health literacy through educational workshops.

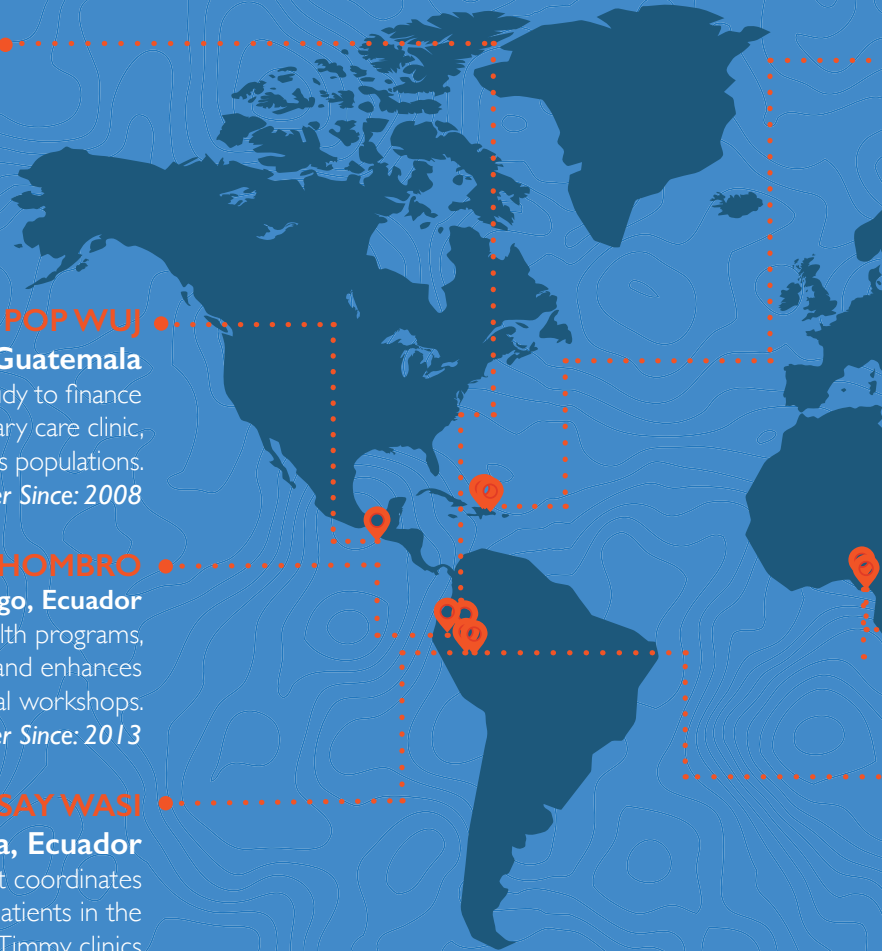
*Timmy Partner Since: 2013*

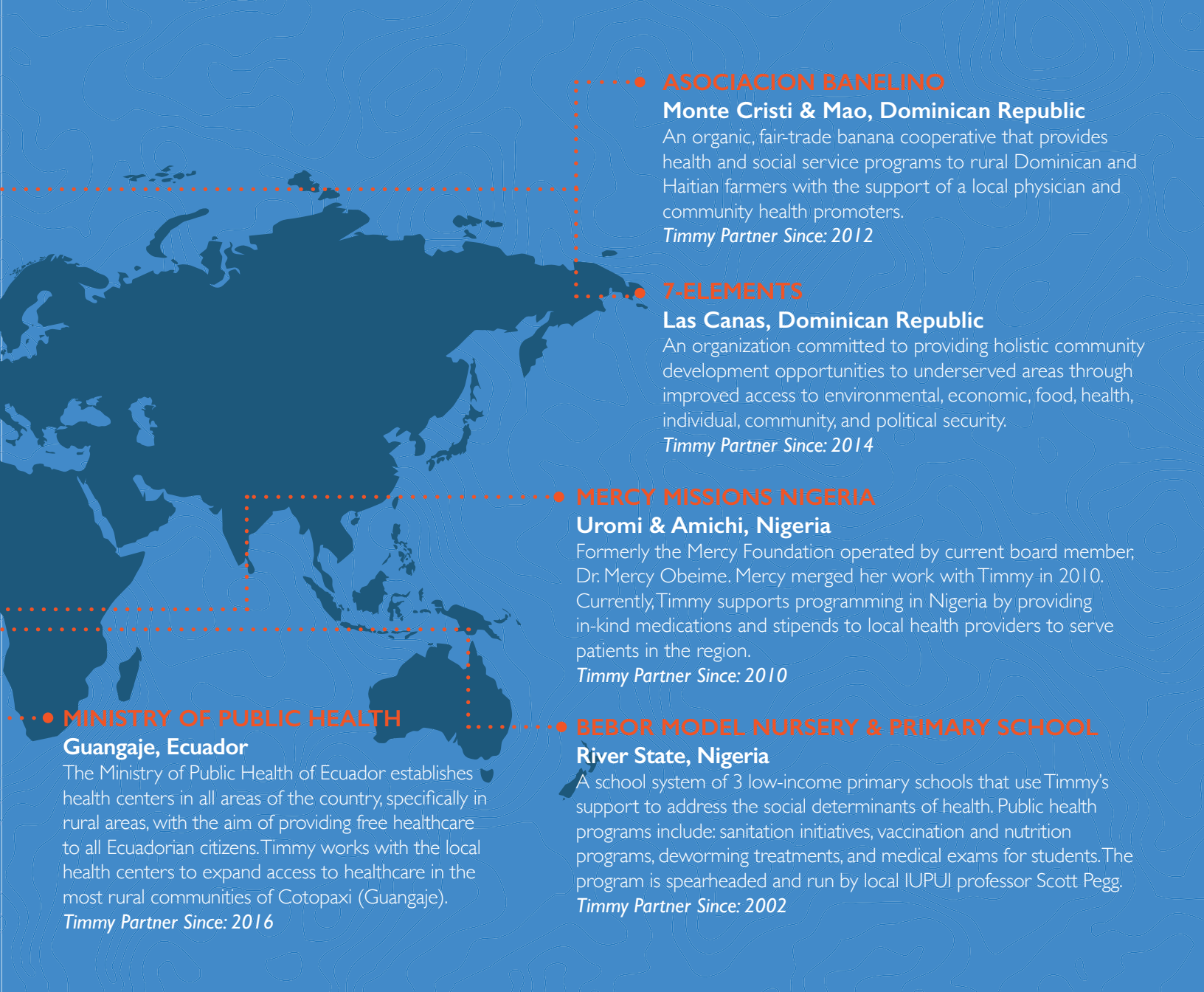
## **SUMAK KAWSAY WASI**

### **Tena (Misahualli) & Chontapunta, Ecuador**

The charitable arm of the provincial government, that coordinates community visits and provides referral services to rural patients in the Amazon Basin. Sumak Kawsay Wasi also helps promote Timmy clinics to communities, provides free transportation during brigades and free transportation for referral patients to health clinics and hospitals.

*Timmy Partner Since: 2010*





● **ASOCIACION BANELINO**

**Monte Cristi & Mao, Dominican Republic**

An organic, fair-trade banana cooperative that provides health and social service programs to rural Dominican and Haitian farmers with the support of a local physician and community health promoters.

*Timmy Partner Since: 2012*

● **7-ELEMENTS**

**Las Canas, Dominican Republic**

An organization committed to providing holistic community development opportunities to underserved areas through improved access to environmental, economic, food, health, individual, community, and political security.

*Timmy Partner Since: 2014*

● **MERCY MISSIONS NIGERIA**

**Uromi & Amichi, Nigeria**

Formerly the Mercy Foundation operated by current board member, Dr. Mercy Obeime. Mercy merged her work with Timmy in 2010. Currently, Timmy supports programming in Nigeria by providing in-kind medications and stipends to local health providers to serve patients in the region.

*Timmy Partner Since: 2010*

● **BEBOR MODEL NURSERY & PRIMARY SCHOOL**  
**River State, Nigeria**

A school system of 3 low-income primary schools that use Timmy's support to address the social determinants of health. Public health programs include: sanitation initiatives, vaccination and nutrition programs, deworming treatments, and medical exams for students. The program is spearheaded and run by local IUPUI professor Scott Pegg.

*Timmy Partner Since: 2002*

● **MINISTRY OF PUBLIC HEALTH**

**Guangaje, Ecuador**

The Ministry of Public Health of Ecuador establishes health centers in all areas of the country, specifically in rural areas, with the aim of providing free healthcare to all Ecuadorian citizens. Timmy works with the local health centers to expand access to healthcare in the most rural communities of Cotopaxi (Guangaje).

*Timmy Partner Since: 2016*

# PUBLIC HEALTH PROGRAMS

## Nutrition Program

Pop Wuj, a Spanish language school teachers' cooperative founded in 1992, has served as Timmy's local partner in Quetzaltenango (Xela), Guatemala since 2007. Dr. Meg Sullivan, who served as a Timmy Global Health Medical Director and pediatrician at the Pop Wuj medical clinic from 2010-2012, recognized the urgent need for a targeted effort to combat the high prevalence of stunting (chronic malnutrition) among children in the communities served by Pop Wuj. To address this issue she worked closely with Pop Wuj to develop a Nutrition Program. The program identifies high risk children between 6-24 months, and combines the use of nutritional supplements with education to help improve the children's nutritional status, long-term growth and cognitive potential.

Since its inception in 2011, the Nutrition Program has greatly expanded in scope and in number of communities served. Each month Pop Wuj hosts a workshop for mothers and their young children enrolled in the program with an educational presentation around health issues such as hygiene, breastfeeding, healthy eating and self-esteem. Pop Wuj medical staff and volunteers weigh and measure the children at each visit, and they provide a month's supply of the appropriate nutritional supplement for the child's current nutritional status. Children who are sick can also be seen and treated in the accompanying mobile clinic.

## Safe Water Solutions Program

Timmy works with six communities in Ecuador's Amazon River Basin to provide community-wide access to safe drinking water and decrease the incidence of diarrheal diseases. Along with partners in Notre Dame's Masters in Global Health Research program, Timmy engages with long term volunteers who travel to communities every summer to perform public health research on water transmitted parasites. In the next year, Timmy will expand the Safe Water Solutions program to include a new community, two new program partnerships, as well as household filtration systems. These filters will be installed in 35 households in one of our most isolated communities, providing people with access to up to 10 years of safe drinking water.

## Community Health Promoter Program

Timmy Global Health currently works with 129 community health promoters in six sites. Timmy has incorporated Community Health Promotion programs in its sites in order to carry out its short-term medical service and long-term investments in community health. In the last year, 37 promoters were trained to launch a new Community Health Promotion program in Guangaje, Ecuador. Throughout the year, promoters assist with medical service trips by recruiting patients, following up with patients after medical service trips to coordinate referral services and chronic disease management, and host community education forums on various health topics. In 2017, Timmy promoters engaged with approximately 19,000 people who could benefit from increased contact with basic health services and health education.





## TIMMY GLOBAL HEALTH IN ACTION

### **Bertha Ximena Vega Pastuña**

14 years old  
Guangaje, Ecuador

Bertha was a patient in a Timmy Brigade to Guangaje, Ecuador in October of 2017. Her parents told the doctor that she was having problems at school and her grades were dropping. Bertha said she would get really bad headaches and would get sleepy at school and when doing her homework. Her parents were worried because Bertha had always been a good student, one of the best in her class, and now she was nearly failing the semester.

The brigade doctor did a vision test and discovered that Bertha had vision loss. She was referred to an optometrist in the nearest city with specialty care, and Timmy coordinated her transportation to and from the appointment. The optometrist prescribed glasses for her vision, and Bertha chose her favorite pair.

A month after receiving her glasses, Bertha was excelling in school again, and she was just voted as class president. She is very happy with her glasses and is really thankful she can enjoy school as much as she did before. Her parents say they feel like they got her daughter back and are very thankful she can go on chasing her dreams and getting an education.

# IMPACT OF STUDENT CHAPTERS

**47**

Number of student chapters:  
34 undergraduate colleges &  
universities, 1 nursing program,  
3 medical schools, 2 pharmacy  
programs, 7 high schools

**\$119,000**

Amount of funding raised  
by student chapters for  
international partners  
and patients

**203**

Number of global health  
advocacy events hosted by  
Timmy chapters

**\$20,000**

Amount of scholarship  
funding disbursed to students  
for participation in medical  
service trips



## THE NEXT GENERATION OF GLOBAL HEALTH LEADERS

Timmy students are the next generation of global leaders. They work year-round to combat health disparities at home and abroad by fulfilling our three global health pillars: service, fundraising, and advocacy. Timmy students serve in their local community and internationally on medical service trips, fundraise throughout the year for their international partner organization, and engage their local communities in the movement for health equity.

## Student Conference

The annual Student Leadership Conference brings together Timmy college chapter leaders, chapter members, Timmy staff, and leaders in the field of global health.

The three-day conference offers opportunities for students to network with staff, guest speakers and other chapter members from across the country. Students are exposed to keynote addresses by global health leaders, interactive workshops, career panels and high quality training sessions related to their chapter leadership positions and key program areas.



## Scholarship

The Timmy Global Health Hank Benjamin Memorial Scholarship Fund was established in 2012 in memory of Hank Benjamin, a medical student who volunteered with Pop Wuj, Timmy's partner organization in Guatemala. Since 2012, Timmy has given out over \$70,000 to ensure that all students, regardless of resources, have the opportunity to participate in a high-impact experience through traveling on a medical service trip.

Applications are reviewed by a Scholarship Committee comprised of current and former Timmy staff, volunteers, and community members. One third of applicants are awarded a scholarship. Students are evaluated based on their financial need, their prior service work, participation in their Timmy chapter, relevant career plans, and Spanish speaking ability.





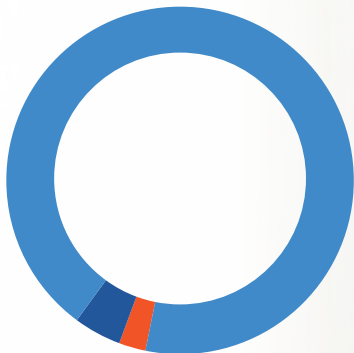
“ I remember the very first patient we had on brigade was a four-year-old with a heart murmur, which was diagnosed as a cardiac defect. Pop Wuj and Timmy were able to get him to the closest cardiology hospital and have the heart defect successfully repaired. I went back to Guatemala five years later, when he was nine years old. He and his mother had stopped by the clinic to thank us for the work we had done. Timmy is about these kinds of success stories where you are really impacting people in a very strong way. ”

– Meg Sullivan, MD,  
Medical Advisory Committee Co-Chair

“ We were headed to a clinic that was only accessible by 4x4 truck, and there was only one road into the clinic. Apparently they decided to work on the road that day. So there were large piles of rocks dumped every 50-100 ft over a stretch of road. It was impassable with the trucks, but not going to clinic wasn't an option because there were many people waiting. So we all got out of our trucks and moved big rocks to the side until we could push through smaller rocks in the truck. Everyone helped: the students, the providers, the drivers, the translators. It took everyone. This is characteristic of the commitment Timmy has to the communities it serves. Thankfully, we finally made it to clinic and were able to see patients. ”

– Shawn Hake, PA,  
Medical Advisory Committee Member

# FINANCIALS



## Functional Expenses:

90% Program Services

6% Management & General

4% Fundraising

**\$2.1 MILLION**

WORTH OF MEDICATION  
DISTRIBUTED

**\$119,000**

AMOUNT FUNDRAISED  
BY STUDENT CHAPTERS  
FOR INTERNATIONAL  
PARTNERS & PATIENTS



# TIMMY GLOBAL HEALTH MEDICAL ADVISORY COMMITTEE 2016-2017

“TIMMY GLOBAL HEALTH has an incredibly dedicated group of medical professionals that develops and updates our treatment protocols. We follow evidence-based and international health standards that are compatible with the resource-limited settings in which we work.

This group ensures Timmy Global Health delivers the highest quality care to our patients. ”

- Dr. Brett Hesse,  
Medical Advisory Committee  
Co-Chair

## **Brett Hesse**

*Co-Medical Director*  
Physician  
Glenwood Medical Associates  
Clinic, Valley View Hospital  
Hospitalist

## **Nancy Rosselot**

*Co-Medical Director*  
Physician  
Pediatrician, Framingham  
Pediatrics

## **Lauren Baldwin**

Pharmacist  
Pharmacy Consultant,  
Indianapolis

## **Christopher Dainton**

Physician  
Emergency Medicine at Grand  
River Hospital and St. Mary's  
Hospital

## **Andrew Goldstein**

Physician

## **Leslie Kearfott**

Nurse Practitioner  
Pediatric Specialist of  
Bloomfield Hills, MI

## **Susie Sauter**

Registered Nurse  
Timmy Global Health in  
Indianapolis

## **Judy Pinsker**

Physician  
Tufts Medical Center

## **Lauren Cottingham**

Registered Nurse  
Community Health

## **Joe Garcia**

Physician  
MedStar Southern Maryland  
Emergency Dept and ICU,  
Patient Safety

## **Shawn Hake**

Physician Assistant  
Froedtert Hospital & Medical  
College of WI

## **Becky Lomax**

Clinical Microbiologist  
Timmy Global Health in  
Indianapolis

## **Mercy Obeime**

Director of Community &  
Global Health  
Franciscan St. Francis Health

## **Joseph Schwartz**

Physician  
Palo Alto Medical Foundation, CA

## **Meg Sullivan**

Physician  
NYC Department of Health,  
Office of School Health

# TIMMY GLOBAL HEALTH BOARD OF DIRECTORS 2016-2017 MEMBERS

## **Chuck Dietzen, MD**

### ***Founder & President***

Medical Director, Pediatric Rehab  
Riley Hospital for Children

## **Mercy Obeime, MD**

### ***Founder***

Director of Community & Global Health  
Franciscan St. Francis Health

## **Emily Krueger**

### ***Board Chair***

Chief Operating Officer  
16Tech Community Corporation

## **Ashish Kalgaonkar, RPh**

### ***Vice Chair***

Senior Director of Global Transparency Office  
Eli Lilly & Company

## **Kendall Millard, JD**

### ***General Council***

Partner  
Barnes & Thornburg LLP

## **William Metzger, CPA**

### ***Board Treasurer***

Partner  
BKD

## **Alicia Kurtz**

### ***Fundraising Committee Chair***

Client Experience  
JLL

## **Laura Burdick, MPH**

### ***Programming Chair***

Wellness Advocate  
Owner & Heath Coach Stride10

## **Brett Hesse, MD**

### ***Medical Advisory Committee Co-Chair***

Physician  
Glenwood Medical Associates Clinic

## **Phil Berry**

### ***CEO***

Northwind Pharmaceuticals

## **Debra Des Vignes**

### ***Communications Associate, Contractor***

Eli Lilly and Company

## **Brian Egan, MD**

Anesthesiologist  
Riley Hospital for Children

## **Ken Lipetz, PhD, HCLD**

Global Patient Safety Medical Advisor  
Eli Lilly & Company

## **Andy McGovern**

Principal Program Manager  
at Bing  
Microsoft Corporation

## **Jacqueline Pimentel-Gannon, JD**

Associate  
Faegre Baker Daniels

## **Rob Renihan**

Director of Business Effectiveness  
Our Health

## **Tom Wheeler, JD**

Acting Assistant Attorney General  
The Civil Rights Division  
U.S. Department of Justice

## **Matt MacGregor**

### ***Ex-Officio Member of the Board***

Fund Manager  
Global Fund to Fight AIDs,  
TB & Malaria

## **Andreas Sashegyi**

### ***Ex-Officio Member of the Board***

Research Advisor  
Eli Lilly and Company

## **Amadou Yattassaye**

### ***Member of the Board (Advisory)***

VP of Operations Planning/COO  
Anthem Blue Cross Blue Shield

## THANK YOU TO OUR GENEROUS PARTNERS!

- American Medical Association Insurance
- Barnes and Thornburg, LLP
- BKD CPAs and Advisors
- Blessings International
- Bottom Line Travel
- Bridge of Life founded by DaVita
- Conrad Hotel Indianapolis
- Coverdale Consulting
- Detail + Design
- FAME
- FirstPerson
- Foresite, Inc.
- Franciscan Health Family Medicine Residency
- Gabrielle Cheikh Photography
- Global Gifts
- Henry Schein
- Heritage Environmental
- Hydralyte
- Indiana University - School of Public Health, Bloomington
- Indy 11
- iSalus Healthcare
- LDI
- Lehman's Terms
- Marian University College of Osteopathic Medicine
- Microsoft
- Monarch Beverage Company
- National Bank of Indianapolis
- Northwestern Mutual Wise Financial
- Northwind Pharmaceuticals
- One Click Ventures
- PolicyStat LLC
- Rotary Club of Indianapolis
- Shoefly Public House
- Sikich
- St. Vincent
- This Bar Saves Lives
- University of Indianapolis - Master of Public Health
- Vitamin Angels
- Zink Distribution Company



**TIMMY**  
GLOBAL HEALTH

22 E. 22 STREET, INDIANAPOLIS, IN 46202  
317.920.1822 | [TIMMYGLOBALHEALTH.ORG](http://TIMMYGLOBALHEALTH.ORG)

